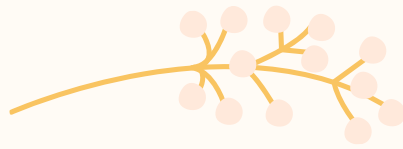


# 24th Annual Outstanding Faculty & Staff Awards



THURSDAY APRIL 12TH, 2023

WOMEN'S BUILDING, FORMAL LOUNGE

## Ceremony & Reception

 Graduate  
Student Senate





# Schedule of Events



Welcome

Patricia Maurer  
GSS Co-President

Opening Remarks

Dr. Vijay Ramani  
Vice Provost for Graduate Education  
Roma B. & Raymond H. Wittcoff Distinguished  
University Professor

Presentation Ceremony

Aline Arra  
OFSA Committee Chair

*Special thanks to*

GSS OFSA Committee

Aline Arra  
Maegan Ruiz

GSS Co-Presidents

Patricia Maurer  
Gloria Zhou

The Graduate Center Staff

Rachel Pepe  
Jessica Cissell  
Nancy Cummings





# Outstanding Staff Awards



Beth Gartin

Assistant to the Director,  
Institute for Material Science  
& Engineering

Jennifer Brown

Manager, Marketing and  
Student Recruitment

Joan Wang

Chinese Studies and East  
Asian Studies Librarian

Meg McClelland

Assistant to the Director of  
Clinical Psychology and  
Director of Graduate Studies

Rachael Johnson

International and Graduate  
Program Coordinator,  
School of Law

Rachel Pepe

The Graduate Center  
Manager





# Outstanding Faculty Awards



Gregory Magarian  
Thomas and Karole Green  
Professor of Law

Gwendalyn Randolph  
Emil R. Unanue Professor,  
Pathology & Immunology

Jeffrey Gillis-Davis  
Research Professor of  
Physics

Lamar Pierce  
Beverly and James Hance  
Professor of Strategy

Matthew Lew  
Associate Professor,  
Electrical & Systems  
Engineering

Minyuan Zhao  
Associate Professor of  
Strategy



Richard Loomis  
Professor of Chemistry



The Graduate Student Senate hosts the annual Outstanding Faculty & Staff Awards ceremony to honor Washington University faculty and staff members who positively impact the graduate student experience.

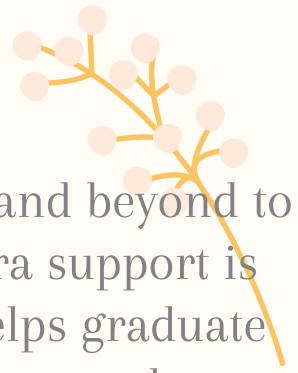
**Outstanding staff members** are selected based on evidence of exceptional graduate student community development, personal relationship building, and advocacy on behalf of graduate students. While outstanding service comes in different forms, the following three criteria were used in evaluating all nominations:

- Graduate Community Development: Makes unique contributions to the graduate student community
- Individual Support & Connection: Invests in relationship building through a sincere interest in students and their individual interests
- Graduate Student Advocate: Advocates for graduate student well-being and opportunities, and connects students to resources on and off-campus

**Outstanding faculty members** are selected based on evidence of exceptional contributions to graduate students' quality of life and workplace, scholarly development, and professional development. Each nomination was evaluated based on the following three criteria:

- Contribution to Quality of Life and Workplace: Demonstrates sincere interest in students' well-being and creates an inclusive environment
- Contribution to Scholarly Development: Contributes to individual scholarly interests and aids in acquiring skills, opportunities, and resources to support these interests
- Professional Development: Cultivates new perspectives, professional transitions, and the long-term development from student to a colleague, and advocates for extra-curricular activities and professional development experiences
- Long-Term Impact on Mentee: Positively alters students' outlook on live and/or carrer

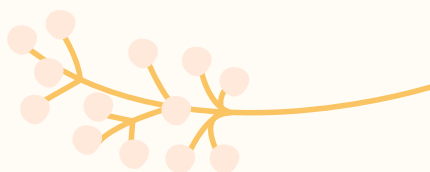
## Beth Gartin



"Beth is always so kind and approachable. Beth goes above and beyond to help graduate students in their time of need, and this extra support is definitely not in her job description! In particular, Beth helps graduate students keep on track by reminding them of various events, updates, and opportunities - she makes the administrative parts of graduate school a bit easier by making sure that students have met all of their requirements. She also knows the answer to (almost) anything. From questions about program requirements, to taxes, to health insurance, she answers student questions in a clear and informative way, and goes to find the answer if she is unsure. She is always cheery and willing to help, which can mean a lot to graduate students."

## Jennifer Brown

"Jenny is excellent at making all students feel that they are a valued part of the program in Physical Therapy. She has an open-door policy with the graduate students, and she genuinely cares about every student in the department. She always makes sure that all students know that her office is a safe space to come and talk. Jenny is committed to ensuring that all potential students receive all the information they need to make an informed decision about attending WUSM for their graduate studies. Additionally, she is committed to recruiting individuals from diverse backgrounds and has advocated for the program to be involved in programs that help under-served students learn about potential opportunities in science. Jenny understands the complexities that go along with running a graduate education program and she does everything she can to support students in this intricate system."

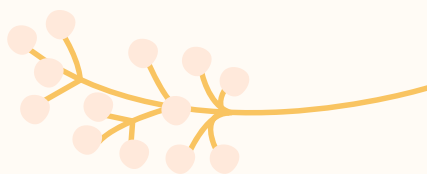


## Joan Wang

"Joan has provided great support for graduate students in the departments of humanities. She always shows great willingness to provide academic help for students who need the support from librarians. She is always available when you are seeking help for searching and obtaining research resources and has advocated for funding so that graduate students can access additional databases to support their research. Joan is also very supportive in assisting graduate students in their professional teaching development. On numerous occasions, Joan has served as a speaker in courses to support student's research and has provided helpful introductions to our university's library resources to undergraduates. Joan, serving as an East Asian Librarian, has worked very hard to support graduate students."

## Meg McClelland

"Meg is the first line of contact for graduate students and has gone above and beyond in supporting them. Besides being personable, Meg is also practical and helpful in her interactions with students - she will exert extra effort to make sure that graduate students meet their milestones in a timely fashion even when they inevitably forget to submit administrative documents. She also has been instrumental in making clearer updates to processes and instructions in the Graduate Handbook after students brought up questions. Meg is such a kind and supportive person who cares about individual students, even sending everyone a personalized message on their birthday! Her support knows no bounds. She will be retiring this summer and her kind presence and extensive departmental knowledge will be missed by graduate students, staff and faculty in the department."





## Rachael Johnson

"Rachael's kindness and dedication have impacted students and the law school community deeply. Her warmth and guidance transformed St. Louis and WashU into many students' second home. Rachael is the heart of support for international students at the law school. Though she may not take center stage, Rachael is a masterful orchestrator, seamlessly coordinating the intricate details behind the scenes to ensure everything runs smoothly. When facing challenges, her name is always the first on the lips of those in need, knowing she will go above and beyond to help. Her unwavering commitment to improving the lives of graduate students, particularly international students, makes her truly deserving of this prestigious recognition."

## Rachel Pepe

"Rachel is deeply committed to ensuring that graduate and professional students at WashU have access to the resources and support they need to succeed. She is involved in virtually every aspect of graduate student group programming and event planning, and is always available to offer guidance and support. Her open-door policy and genuine concern for the well-being of graduate students has earned her the respect and admiration of the entire graduate student community. She always has an open ear for graduate students and is constantly looking for ways to improve the student experience on campus. She listens to student ideas and goes the extra mile to connect students with the right people in the administration to make them happen. Rachel has been an invaluable asset to the graduate student community for many years, and now the graduate student community can acknowledge the immense impact she has made."



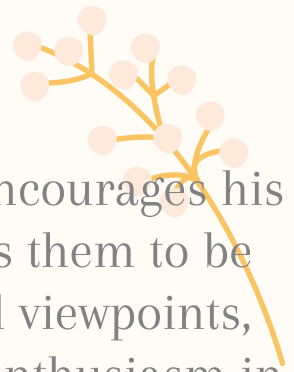
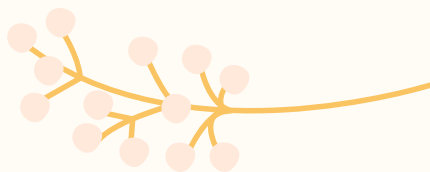


## Gregory Magarian

"Gregory is the kindest faculty member at WashU Law. He encourages his students to believe in themselves and constantly empowers them to be intellectually brave. He is accepting and encouraging of all viewpoints, showing kindness and appreciation to all his students. His enthusiasm in the classroom is contagious. You can find him chatting and discussing legal doctrine after every class with students well after the class period is over. Gregory has taught his students how to approach professional problems with intellectual curiosity and an open mind. He has always made an intentional effort to make his class feel inclusive and safe by encouraging all students to make themselves heard. As a mentor and professor, Gregory is generous and supportive. He is someone who strives to lift others up."

## Gwen Randolph

"Gwen has gone above and beyond to help students through her activism, primarily to support female trainees and faculty. She is truly a light in a broken system that she works tirelessly to fix daily. She is the president of the American Woman's Network and has worked diligently over the past year to create events to foster a better climate on campus. Gwen is the director of the Immunology PhD program. In this role, it is obvious to all that her priority is the students. She has modified lecture content, lecturers, and qualifying exam formats based on feedback from students. She engages trainees in scholarly discussions about their data and encourages them to think critically. Gwen is unstoppable. Her energy, compassionate spirit, and resourcefulness are unmatched. She had mentored 6 pre-doctoral and 29 postdoctoral trainees so far - all have remained in medical science careers linked to research and all stay in touch with Gwen. Thus, her mentorship and guidance last a lifetime."

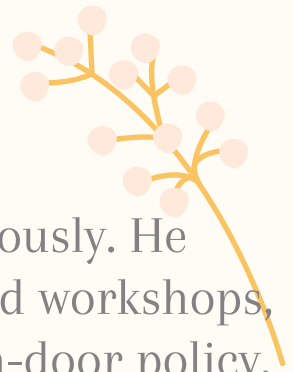
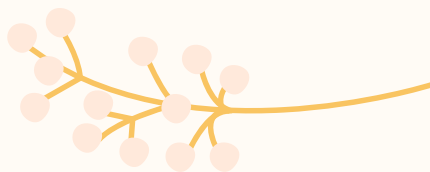


## Jeffrey Gillis-Davis

"Jeff takes his student's scholarly development very seriously. He encourages his students to attend scholarly conferences and workshops, while being mindful of their busy schedule. He has an open-door policy, always willing to discuss various issues with experiments and providing advice. One of the strongest indicators of Jeff's commitment to this students' professional development is the Internal Development Program that he runs. This is a semester-long program through his NASA-funded research team that focuses on helping undergraduates, graduate students, and postdoctoral students set, work towards, and achieve their various goals. This includes research milestones, professional development goals, and even personal growth goals."

## Lamar Pierce

"Lamar is a remarkable scholar and educator. As the PhD program coordinator for the Strategy and Entrepreneurship area, he has demonstrated his commitment to supporting the academic and professional development of doctoral students. He is a vocal advocate for policies and resources that prioritize student well-being, such as flexible schedules, ample funding, and mental health support. Lamar recognizes that students come from diverse backgrounds with varying skill sets and timelines and he works to cultivate an environment of equity and mutual support. Lamar serves as the Editor-in-Chief of the journal Organization Science and in this role his is working to promote a more inclusive and diverse academic community. His commitment to nurturing the next generation of scholars is evident in the way he continues to provide guidance and support long after his students have left the program."

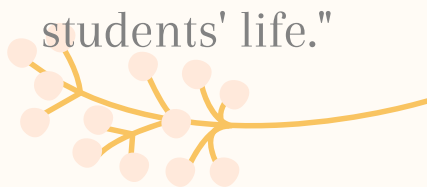


## Matthew Lew

"Matthew is very involved, not only within his lab and department, but university-wide. Matthew is the faculty advisor of the student chapter, Spectra. Under the support of Matthew, Spectra has held a student-led conference, ran an outreach activity at the St. Louis Science center, and visited local startup companies. Inside the research lab, Matthew is a very supportive mentor for his students both in research and career development. He is always very keen about keeping his research goals that are best for humankind. He has demonstrated excellent performance of that throughout his academic career. He demonstrates being an ideal leader with an excellent personal, as well as professional and highly knowledgeable, background. Being under the supervision of Matthew helps students become professionals in their research and beyond."

## Minyuan Zhao

"Minyuan cares about her students both personally and academically. Minyuan hosts gatherings for international students over the holidays at her own place. This is such a great event for her to contribute to the quality of life of graduate students. Minyuan also helped her students through the pandemic by checking in on them and reminding them of the importance of mental health. She has been providing students with endless support for academic achievement by providing her students opportunities to present at conferences, introducing them to her academic network, inviting them to participate in paper reviews, and so on. The attitude towards life as a process, rather than an accomplishment, the devotion to research while being thankful to all the opportunities and network, and the vulnerability and resiliency she shares in research and work all definitely have huge impacts on her students' life."



## Richard Loomis

"Rich is constantly advocating for the betterment of the graduate student experience and speaks up on behalf of those who feel they may not have a voice. Rich organized and supported the development of a student-nominated and student-led Chemistry Graduate Student Advisory Committee, which organized career talks from people in industry, and science talks given by graduate students for peer feedback, as well as the revamping and revitalization of the Marcus Lecture. Rich is also one of the initial creators of a safety workshop at ExxonMobil called PALS. He saw a need for an interactive beneficial professional experience for students and worked hard with leaders at ExxonMobil to give students this opportunity. While he may be loud, Rich is always welcoming and willing to help a graduate student out, even if it means bugging his colleagues to respond to our emails. Rich is always available to help students figure out which courses are best to take for their field of interest. One of Rich's main strengths as an advisor is that he cares about what is best for his students."

